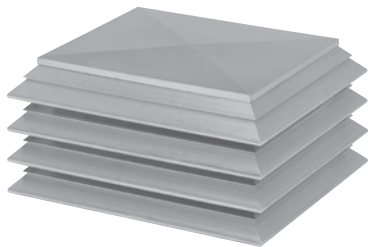


MODEL RLX

LOUVERED PENTHOUSE



MODEL FEATURES

- Exhaust or Supply air up to 69,500 CFM in static pressure applications up to .23" w.g.
- All aluminum construction
- Louvered penthouse design provides a low silhouette and modern design
- Corners are miter cut and heliarch welded for strength and weather protection

MODEL OVERVIEW

Model RLX aluminum louvered penthouse provides a low silhouette and modern design for fresh air intake, pressure relief and gravity applications. With hundreds of optional lengths and heights available, the RLX is frequently used for enclosing unsightly rooftop equipment. The storm resistant aluminum louver design provides weather integrity when properly sized. Catalog capacity ranges from 395 to 69,500 CFM with much greater ranges available in custom sizes. Companion, louvered fan Model LSF offers continuity in rooftop equipment designs.

CONSTRUCTION/SPECIFICATION CHECKLIST

- All aluminum construction for weather resistance, long life and maintenance-free operation.
- Louvers are made from heavy-gauge aluminum.
- Corners are miter cut and heliarch welded for strength and weather protection.
- Cross-braced with heavy-gauge angle for strength and wind resistance.
- Top is cross-braced and rated to 30 pounds per square foot for snow load protection.
- 1/2" x 1" galvanized birdscreen. (Deleted when filters used).

Shipping

- Units with width of 84" and smaller are shipped assembled. Units with a width of 90" and larger are shipped in two pieces for field assembly, (Ex: 84 x 144 ships assembled 90 x 90 ships in 2 pieces)
- Knockdown units assemble with standard tools. Easy installation directions and fasteners are included.

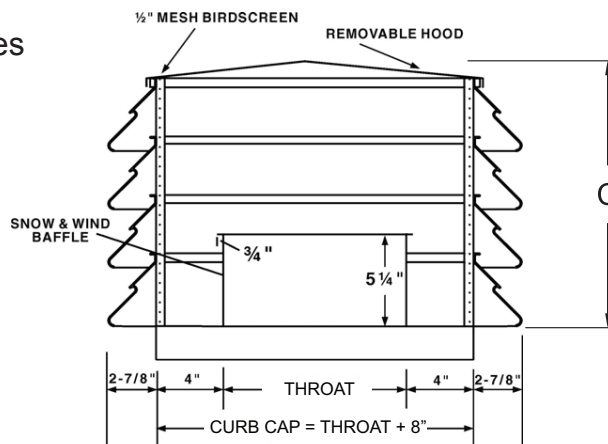
DIMENSIONS

Throat Size = A & B listed as throat size in tables

Curb Cap Size = A or B plus 8

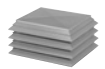
Overall Size (F x G) = A or B plus 13-3/4"

Height (C) = 3-1/2" times number of tiers



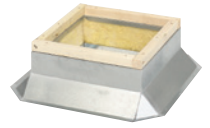
Industry best 5 year fan housing warranty

All specifications are subject to change without notice unless approved in submittal by JencoFan.



OPTIONS/ACCESSORIES

Roof Curb: Prefabricated heavy-gauge galvanized steel, welded construction, 8" high (other heights are also available) with 1-1/2" wood nailer. Assures perfect fit of ventilator to roof opening. Options include burglar bars, single or double pitch construction and hinged curbs for easy duct access.



Motor Operated Damper: Motor operated aluminum damper for positive closure against backdraft.



Automatic Damper: Automatic aluminum damper for ease in installation and effective backdraft protection.

Insulation: Mastic anti-condensate coating or 1" thick fiberglass insulation is added to underside of top to help prevent condensation.

Filters: Permanent type aluminum mesh filters attached to full perimeter of hood. Installed for easy cleaning. On air intake, add .15" to static pressure listed in the tables.

Insect/Weather Screen: Helps prevent insects and snow (in extreme conditions) from entering units. Add .10" to the static pressure tables for exhaust models and .05" for intake ventilators.

Access Section: Used for easier access when unit is used as an equipment cover.

Special Coatings: for protective and decorative purposes. Available coatings include: Synthetic Resin, Epoxy, and Heresite (air-dried phenolic). Contact your representative or the factory for more information on available coatings and colors.



PERFORMANCE/DIMENSIONS

Gravity Relief & Intake

Throat Size A x B	CFM at SP = 0.15																	
	Number of Tiers and Height in Inches (C)																	
	3 10.5	4 14	5 17.5	6 21	7 24.5	8 28	9 31.5	10 35	11 38.5	12 42	13 45.5	14 49	15 52.5	16 56	17 59.5	18 63	19 66.5	20 70
12x12	1199	1225	1238	1245	-	-	-	-	-	-	-	-	-	-	-	-	-	-
12x14	1382	1419	1438	1448	-	-	-	-	-	-	-	-	-	-	-	-	-	-
12x16	1562	1611	1636	1649	-	-	-	-	-	-	-	-	-	-	-	-	-	-
12x18	1737	1800	1832	1850	1861	-	-	-	-	-	-	-	-	-	-	-	-	-
12x20	1909	1987	2026	2049	2063	-	-	-	-	-	-	-	-	-	-	-	-	-
12x24	2244	2354	2411	2444	2464	-	-	-	-	-	-	-	-	-	-	-	-	-
12x30	2729	2892	2979	3029	3061	3082	-	-	-	-	-	-	-	-	-	-	-	-
12x36	3197	3418	3538	3608	3652	3682	-	-	-	-	-	-	-	-	-	-	-	-
12x42	3653	3935	4089	4181	4240	4279	-	-	-	-	-	-	-	-	-	-	-	-
12x48	4101	4444	4635	4750	4823	4873	-	-	-	-	-	-	-	-	-	-	-	-
14x14	1590	1642	1668	1682	1691	1697	-	-	-	-	-	-	-	-	-	-	-	-
14x16	1791	1860	1895	1915	1927	1935	-	-	-	-	-	-	-	-	-	-	-	-
14x18	1987	2075	2120	2146	2162	2172	-	-	-	-	-	-	-	-	-	-	-	-
14x20	2178	2286	2342	2375	2395	2408	2417	-	-	-	-	-	-	-	-	-	-	-
14x24	2548	2700	2781	2828	2857	2877	2890	-	-	-	-	-	-	-	-	-	-	-
14x30	3078	3303	3425	3497	3543	3573	3595	-	-	-	-	-	-	-	-	-	-	-
14x36	3587	3888	4055	4156	4220	4264	4294	4316	-	-	-	-	-	-	-	-	-	-
14x42	4080	4459	4675	4807	4891	4949	4989	5019	-	-	-	-	-	-	-	-	-	-
14x48	4561	5021	5287	5451	5557	5629	5681	5718	-	-	-	-	-	-	-	-	-	-
16x16	2012	2104	2151	2178	2194	2205	2213	2219	-	-	-	-	-	-	-	-	-	-
16x18	2227	2343	2403	2438	2460	2474	2484	2491	-	-	-	-	-	-	-	-	-	-
16x20	2435	2577	2652	2696	2723	2741	2754	2763	-	-	-	-	-	-	-	-	-	-
16x24	2835	3034	3141	3205	3245	3272	3290	3304	3314	-	-	-	-	-	-	-	-	-
16x30	3404	3694	3856	3953	4016	4058	4087	4109	4125	-	-	-	-	-	-	-	-	-
16x36	3945	4331	4552	4687	4775	4835	4877	4908	4931	-	-	-	-	-	-	-	-	-
16x42	-	4950	5234	5410	5525	5604	5660	5701	5732	5756	-	-	-	-	-	-	-	-
16x48	-	5556	5905	6123	6268	6367	6438	6490	6530	6560	-	-	-	-	-	-	-	-
18x18	2458	2604	2682	2727	2755	2774	2787	2797	2804	2809	-	-	-	-	-	-	-	-
18x20	2681	2860	2956	3013	3048	3072	3089	3101	3110	3117	-	-	-	-	-	-	-	-
18x24	3107	3356	3493	3575	3627	3662	3687	3705	3718	3729	3737	-	-	-	-	-	-	-
18x30	3709	4067	4273	4398	4480	4535	4574	4603	4624	4641	4654	-	-	-	-	-	-	-
18x36	4277	4750	5029	5203	5317	5395	5451	5492	5523	5546	5565	-	-	-	-	-	-	-
18x42	-	5410	5767	5992	6142	6245	6319	6374	6415	6447	6472	6492	-	-	-	-	-	-
18x48	-	6055	6490	6770	6957	7087	7181	7250	7302	7343	7375	7401	-	-	-	-	-	-
18x54	-	-	7202	7537	7763	7922	8036	8121	8185	8236	8275	8307	-	-	-	-	-	-
20x20	2917	3135	3254	3325	3370	3400	3421	3436	3448	3457	3464	3469	-	-	-	-	-	-
20x24	3367	3667	3836	3938	4004	4049	4080	4103	4120	4133	4144	4152	-	-	-	-	-	-
20x30	3996	4425	4677	4834	4936	5006	5055	5092	5119	5140	5157	5170	5181	-	-	-	-	-
20x36	-	5148	5488	5704	5847	5946	6017	6069	6108	6139	6163	6182	6198	-	-	-	-	-
20x42	-	5844	6276	6555	6743	6873	6967	7037	7090	7131	7163	7189	7210	7228	-	-	-	-
20x48	-	6521	7046	7391	7625	7789	7908	7996	8064	8116	8158	8191	8219	8241	-	-	-	-
20x54	-	-	7802	8214	8496	8696	8841	8950	9032	9097	9148	9190	9223	9251	-	-	-	-

Selection to the right of the divider are suitable for intake (Perimeter Velocity 600 fpm or less)

Penthouse wider than 90" will ship in pieces.

Assembly instructions and fasteners are included.

Dampers & Insect Screens - Add .10 to area shown in tables.



Gravity Relief & Intake Cont.

Throat Size A x B	CFM at SP = 0.15																		
	Number of Tiers and Height in Inches (C)																		
	3	4	5	6	7	8	9	10	11	12	13	14	15	16	17	18	19	20	
10.5	14	17.5	21	24.5	28	31.5	35	38.5	42	45.5	49	52.5	56	59.5	63	66.5	70		
24x24	-	4263	4501	4649	4745	4811	4857	4892	4917	4937	4953	4965	4976	4984	-	-	-	-	
24x30	-	5101	5452	5676	5825	5928	6002	6057	6098	6130	6155	6176	6192	6206	-	-	-	-	
24x36	-	5891	6359	6666	6874	7019	7125	7203	7263	7309	7346	7376	7400	7420	7436	-	-	-	
24x42	-	-	7234	7627	7898	8090	8230	8335	8415	8477	8527	8567	8600	8627	8649	-	-	-	
24x48	-	-	8082	8565	8902	9143	9320	9453	9555	9635	9699	9751	9793	9827	9857	9881	-	-	
24x54	-	-	8911	9485	9890	10182	10398	10561	10687	10785	10864	10928	10980	11023	11060	11090	-	-	
24x60	-	-	9725	10390	10864	11209	11465	11659	11810	11928	12023	12099	12162	12215	12258	12296	-	-	
30x30	-	6036	6543	6878	7107	7269	7386	7474	7540	7592	7633	7667	7694	7716	7735	7751	-	-	
30x36	-	6901	7568	8023	8339	8566	8733	8859	8955	9031	9091	9139	9179	9212	9239	9262	-	-	
30x42	-	-	8544	9121	9531	9829	10050	10217	10347	10448	10530	10596	10650	10695	10732	10764	10791	-	
30x48	-	-	9484	10184	10690	11062	11340	11553	11718	11849	11953	12038	12108	12166	12215	12257	12292	-	
30x54	-	-	10394	11219	11823	12271	12610	12870	13073	13234	13364	13469	13556	13629	13690	13741	13786	-	
30x60	-	-	-	12232	12934	13461	13861	14171	14413	14607	14763	14890	14995	15083	15157	15219	15273	15319	
30x66	-	-	-	13226	14028	14634	15098	15458	15742	15968	16152	16302	16426	16529	16617	16691	16755	16810	
30x72	-	-	-	-	15108	15794	16322	16734	17060	17321	17532	17706	17850	17970	18072	18158	18232	18296	
36x36	-	7824	8688	9297	9732	10049	10286	10466	10605	10715	10802	10874	10932	10981	11021	11056	11085	11111	
36x42	-	-	9743	10508	11066	11480	11792	12031	12218	12367	12486	12583	12663	12729	12785	12833	12873	12908	
36x48	-	-	10749	11670	12353	12867	13259	13563	13801	13991	14145	14270	14374	14460	14533	14595	14648	14694	
36x54	-	-	11719	12793	13604	14220	14695	15065	15358	15592	15782	15938	16067	16175	16266	16344	16411	16468	
36x60	-	-	-	13887	14824	15544	16104	16543	16892	17173	17401	17589	17746	17877	17987	18082	18163	18233	
36x66	-	-	-	14957	16020	16845	17490	18000	18407	18736	19005	19227	19411	19566	19698	19810	19906	19990	
36x72	-	-	-	-	17195	18125	18858	19440	19906	20285	20595	20851	21065	21245	21398	21529	21641	21739	
36x80	-	-	-	-	18738	19808	20657	21336	21884	22330	22697	23001	23256	23470	23653	23809	23944	24061	
36x84	-	-	-	-	-	20639	21547	22275	22864	23345	23741	24069	24345	24577	24775	24945	25091	25218	
42x42	-	-	-	11812	12523	13059	13470	13788	14039	14239	14401	14533	14643	14734	14811	14877	14933	14981	
42x48	-	-	-	-	13919	14581	15094	15496	15815	16072	16280	16451	16593	16713	16813	16899	16973	17036	
42x54	-	-	-	-	15266	16056	16675	17164	17555	17871	18129	18342	18519	18668	18794	18902	18995	19075	
42x60	-	-	-	-	-	18219	18797	19263	19641	19951	20208	20422	20603	20756	20888	21001	21099		
42x66	-	-	-	-	-	19732	20402	20943	21385	21750	22052	22306	22520	22702	22858	22993	23110		
42x72	-	-	-	-	-	21220	21981	22601	23109	23529	23879	24173	24422	24634	24816	24973	25110		
42x80	-	-	-	-	-	-	24056	24781	25378	25874	26289	26639	26936	27189	27408	27596	27761		
42x84	-	-	-	-	-	-	25081	25859	26502	27037	27485	27863	28185	28460	28696	28902	29080		
42x96	-	-	-	-	-	-	-	29839	30492	31041	31507	31904	32245	32540	32795	33018			
48x48	-	-	-	14363	15408	16221	16860	17366	17771	18099	18367	18589	18773	18929	19060	19173	19270	19353	
48x54	-	-	-	-	16836	17801	18568	19182	19677	20081	20413	20688	20918	21113	21278	21420	21542	21647	
48x60	-	-	-	-	18216	19333	20230	20953	21541	22023	22422	22754	23032	23268	23470	23642	23791	23921	
48x66	-	-	-	-	20826	21852	22686	23369	23932	24399	24790	25119	25399	25638	25844	26021	26176		
48x72	-	-	-	-	-	23441	24387	25166	25812	26350	26801	27183	27508	27786	28026	28234	28415		
48x80	-	-	-	-	-	25518	26614	27523	28280	28914	29449	29903	30290	30623	30910	31160	31378		
48x84	-	-	-	-	-	-	27712	28686	29499	30182	30760	31250	31670	32030	32342	32614	32851		
48x96	-	-	-	-	-	-	30957	32127	33111	33943	34649	35252	35770	36217	36605	36943	37240		
48x108	-	-	-	-	-	-	-	36664	37646	38485	39203	39823	40359	40825	41233	41590			
54x54	-	-	-	16913	18334	19474	20391	21133	21736	22232	22642	22984	23272	23515	23723	23901	24055	24189	
54x60	-	-	-	-	19776	21088	22156	23027	23742	24333	24824	25236	25584	25880	26133	26351	26539	26703	
54x66	-	-	-	-	-	22655	23872	24874	25702	26390	26966	27451	27862	28212	28512	28771	28996	29193	
54x72	-	-	-	-	-	25548	26681	27623	28411	29073	29632	30108	30514	30864	31167	31430	31660		
54x80	-	-	-	-	-	27732	29039	30134	31056	31834	32496	33060	33545	33963	34326	34642	34920		
54x84	-	-	-	-	-	-	30199	31371	32360	33198	33911	34521	35045	35499	35892	36236	36537		
54x96	-	-	-	-	-	-	-	35020	36212	37229	38100	38848	39495	40057	40546	40974	41351		
54x108	-	-	-	-	-	-	-	-	39990	41187	42218	43108	43881	44553	45141	45657	46112		
54x120	-	-	-	-	-	-	-	-	43709	45088	46280	47314	48214	49000	49689	50296	50831		
54x144	-	-	-	-	-	-	-	-	-	-	-	54279	55603	56762	57780	58676	59468	60170	

Selection to the right of the divider are suitable for intake (Perimeter Velocity 600 fpm or less)

Penthouse wider than 90" will ship in pieces.

Assembly instructions and fasteners are included.

Dampers & Insect Screens - Add .10 to area shown in tables.



Gravity Relief & Intake Cont.

Throat Size A x B	CFM at SP = 0.15																			
	Number of Tiers and Height in Inches (C)																			
	3	4	5	6	7	8	9	10	11	12	13	14	15	16	17	18	19	20		
10.5	14	17.5	21	24.5	28	31.5	35	38.5	42	45.5	49	52.5	56	59.5	63	66.5	70			
60x60	-	-	-	19442	21270	22774	24012	25032	25877	26580	27169	27664	28085	28444	28752	29018	29249	29450		
60x66	-	-	-	-	22712	24405	25811	26981	27957	28774	29462	30045	30541	30965	31331	31648	31924	32165		
60x72	-	-	-	-	-	25990	27563	28882	29989	30922	31711	32383	32957	33450	33876	34245	34568	34851		
60x80	-	-	-	-	-	-	29839	31354	32637	33725	34652	35445	36125	36712	37221	37664	38052	38392		
60x84	-	-	-	-	-	-	30955	32568	33938	35105	36101	36955	37689	38324	38875	39356	39777	40148		
60x96	-	-	-	-	-	-	-	36136	37768	39169	40374	41413	42313	43095	43776	44373	44898	45361		
60x108	-	-	-	-	-	-	-	-	41507	43142	44556	45784	46851	47783	48599	49316	49948	50507		
60x120	-	-	-	-	-	-	-	-	-	47044	48669	50085	51322	52405	53357	54197	54938	55597		
60x144	-	-	-	-	-	-	-	-	-	54693	56736	58529	60108	61499	62728	63817	64784	65646		
66x66	-	-	-	-	-	26091	27684	29021	30145	31093	31896	32580	33164	33667	34101	34479	34808	35097		
66x72	-	-	-	-	-	-	29502	31005	32278	33358	34277	35064	35740	36323	36828	37268	37654	37992		
66x80	-	-	-	-	-	-	-	33578	35048	36305	37382	38308	39108	39801	40405	40932	41395	41803		
66x84	-	-	-	-	-	-	-	34839	36406	37751	38908	39905	40768	41517	42171	42743	43245	43689		
66x96	-	-	-	-	-	-	-	-	40395	42003	43398	44608	45663	46584	47390	48100	48726	49280		
66x108	-	-	-	-	-	-	-	-	-	46148	47779	49205	50453	51548	52512	53363	54117	54786		
66x120	-	-	-	-	-	-	-	-	-	50209	52077	53718	55161	56432	57555	58550	59434	60221		
66x144	-	-	-	-	-	-	-	-	-	58147	60484	62553	64387	66014	67459	68747	69897	70925		
72x72	-	-	-	-	-	29405	31380	33064	34501	35729	36781	37685	38465	39140	39728	40242	40692	41089		
72x80	-	-	-	-	-	-	-	35728	37382	38806	40035	41098	42020	42822	43523	44138	44679	45157		
72x84	-	-	-	-	-	-	-	37029	38792	40314	41632	42774	43768	44635	45393	46060	46648	47168		
72x96	-	-	-	-	-	-	-	-	42920	44734	46318	47701	48912	49975	50910	51736	52467	53117		
72x108	-	-	-	-	-	-	-	-	46927	49030	50877	52501	53932	55193	56309	57298	58177	58960		
72x120	-	-	-	-	-	-	-	-	50843	53229	55338	57203	58853	60314	61612	62767	63796	64716		
72x144	-	-	-	-	-	-	-	-	58476	61418	64043	66384	68471	70334	71999	73490	74826	76027		
84x84	-	-	-	-	-	-	-	41219	43362	45236	46875	48310	49570	50677	51653	52516	53281	53962		
84x96	-	-	-	-	-	-	-	-	49946	51903	53631	55158	56510	57709	58775	59725	60573			
84x108	-	-	-	-	-	-	-	-	54497	56767	58785	60580	62177	63602	64875	66103	67035			
84x120	-	-	-	-	-	-	-	-	-	61504	63809	65870	67714	69365	70846	72176	73374			
84x144	-	-	-	-	-	-	-	-	-	70701	73569	76155	78487	80592	82492	84210	85765			

Selection to the right of the divider are suitable for intake (Perimeter Velocity 600 fpm or less)

Penthouse wider than 90" will ship in pieces.

Assembly instructions and fasteners are included.

Dampers & Insect Screens - Add .10 to area shown in tables.



Gravity Relief & Intake

Throat Size A x B	CFM at SP = 0.05																	
	Number of Tiers and Height in Inches (C)																	
	3	4	5	6	7	8	9	10	11	12	13	14	15	16	17	18	19	20
	10.5	14	17.5	21	24.5	28	31.5	35	38.5	42	45.5	49	52.5	56	59.5	63	66.5	70
12x12	692	707	715	719	-	-	-	-	-	-	-	-	-	-	-	-	-	-
12x14	798	820	830	836	-	-	-	-	-	-	-	-	-	-	-	-	-	-
12x16	902	930	944	952	-	-	-	-	-	-	-	-	-	-	-	-	-	-
12x18	1003	1039	1058	1068	1074	-	-	-	-	-	-	-	-	-	-	-	-	-
12x20	1102	1147	1170	1183	1191	-	-	-	-	-	-	-	-	-	-	-	-	-
12x24	1296	1359	1392	1411	1423	-	-	-	-	-	-	-	-	-	-	-	-	-
12x30	1575	1670	1720	1749	1767	1779	-	-	-	-	-	-	-	-	-	-	-	-
12x36	1846	1974	2042	2083	2109	2126	-	-	-	-	-	-	-	-	-	-	-	-
12x42	2109	2272	2361	2414	2448	2470	-	-	-	-	-	-	-	-	-	-	-	-
12x48	2367	2566	2676	2742	2785	2813	-	-	-	-	-	-	-	-	-	-	-	-
14x14	918	948	963	971	977	980	-	-	-	-	-	-	-	-	-	-	-	-
14x16	1034	1074	1094	1106	1113	1117	-	-	-	-	-	-	-	-	-	-	-	-
14x18	1147	1198	1224	1239	1248	1254	-	-	-	-	-	-	-	-	-	-	-	-
14x20	1257	1320	1352	1371	1383	1390	1396	-	-	-	-	-	-	-	-	-	-	-
14x24	1471	1559	1606	1633	1650	1661	1669	-	-	-	-	-	-	-	-	-	-	-
14x30	1777	1907	1977	2019	2045	2063	2075	-	-	-	-	-	-	-	-	-	-	-
14x36	2071	2245	2341	2399	2437	2462	2479	2492	-	-	-	-	-	-	-	-	-	-
14x42	2355	2575	2699	2775	2824	2857	2880	2898	-	-	-	-	-	-	-	-	-	-
14x48	2633	2899	3053	3147	3208	3250	3280	3301	-	-	-	-	-	-	-	-	-	-
16x16	1162	1215	1242	1257	1267	1273	1278	1281	-	-	-	-	-	-	-	-	-	-
16x18	1286	1353	1387	1408	1420	1428	1434	1438	-	-	-	-	-	-	-	-	-	-
16x20	1406	1488	1531	1556	1572	1583	1590	1595	-	-	-	-	-	-	-	-	-	-
16x24	1637	1752	1814	1850	1873	1889	1900	1908	1913	-	-	-	-	-	-	-	-	-
16x30	1965	2133	2226	2282	2318	2343	2360	2372	2382	-	-	-	-	-	-	-	-	-
16x36	2278	2500	2628	2706	2757	2791	2816	2833	2847	-	-	-	-	-	-	-	-	-
16x42	-	2858	3022	3123	3190	3235	3268	3292	3309	3323	-	-	-	-	-	-	-	-
16x48	-	3208	3409	3535	3619	3676	3717	3747	3770	3788	-	-	-	-	-	-	-	-
18x18	1419	1504	1548	1574	1591	1602	1609	1615	1619	1622	-	-	-	-	-	-	-	-
18x20	1548	1651	1707	1739	1760	1774	1783	1790	1795	1799	-	-	-	-	-	-	-	-
18x24	1794	1937	2017	2064	2094	2114	2129	2139	2147	2153	2157	-	-	-	-	-	-	-
18x30	2141	2348	2467	2539	2586	2618	2641	2657	2670	2679	2687	-	-	-	-	-	-	-
18x36	2469	2742	2904	3004	3070	3115	3147	3171	3188	3202	3213	-	-	-	-	-	-	-
18x42	-	3124	3329	3460	3546	3606	3648	3680	3704	3722	3737	3748	-	-	-	-	-	-
18x48	-	3496	3747	3908	4017	4092	4146	4186	4216	4240	4258	4273	-	-	-	-	-	-
18x54	-	-	4158	4351	4482	4574	4640	4689	4726	4755	4778	4796	-	-	-	-	-	-
20x20	1684	1810	1879	1920	1946	1963	1975	1984	1991	1996	2000	2003	-	-	-	-	-	-
20x24	1944	2117	2215	2274	2312	2338	2356	2369	2379	2386	2392	2397	-	-	-	-	-	-
20x30	2307	2555	2700	2791	2850	2890	2919	2940	2956	2968	2977	2985	2991	-	-	-	-	-
20x36	-	2972	3169	3293	3376	3433	3474	3504	3527	3544	3558	3569	3579	-	-	-	-	-
20x42	-	3374	3624	3785	3893	3968	4022	4063	4093	4117	4136	4151	4163	4173	-	-	-	-
20x48	-	3765	4068	4267	4402	4497	4566	4617	4656	4686	4710	4729	4745	4758	-	-	-	-
20x54	-	-	4504	4742	4905	5021	5104	5167	5215	5252	5282	5306	5325	5341	-	-	-	-

Selection to the right of the divider are suitable for intake (Perimeter Velocity 600 fpm or less)

Penthouse wider than 90" will ship in pieces.

Assembly instructions and fasteners are included.

Dampers & Insect Screens - Add .10 to area shown in tables.



Gravity Relief & Intake Cont.

Throat Size A x B	CFM at SP = 0.05																		
	Number of Tiers and Height in Inches (C)																		
	3	4	5	6	7	8	9	10	11	12	13	14	15	16	17	18	19	20	
	10.5	14	17.5	21	24.5	28	31.5	35	38.5	42	45.5	49	52.5	56	59.5	63	66.5	70	
24x24	-	2461	2599	2684	2739	2777	2804	2824	2839	2851	2860	2867	2873	2878	-	-	-	-	
24x30	-	2945	3148	3277	3363	3422	3465	3497	3521	3539	3554	3566	3575	3583	-	-	-	-	
24x36	-	3401	3672	3849	3969	4053	4114	4159	4193	4220	4241	4258	4272	4284	4293	-	-	-	
24x42	-	-	4176	4404	4560	4671	4752	4812	4858	4894	4923	4946	4965	4981	4994	-	-	-	
24x48	-	-	4666	4945	5140	5279	5381	5458	5517	5563	5600	5629	5654	5674	5691	5705	-	-	
24x54	-	-	5145	5476	5710	5878	6003	6097	6170	6227	6272	6309	6339	6364	6385	6403	-	-	
24x60	-	-	5615	5999	6272	6471	6619	6731	6818	6887	6941	6986	7022	7052	7077	7099	-	-	
30x30	-	3485	3778	3971	4103	4197	4264	4315	4353	4383	4407	4426	4442	4455	4466	4475	-	-	
30x36	-	3985	4370	4632	4815	4946	5042	5115	5170	5214	5248	5276	5299	5318	5334	5348	-	-	
30x42	-	-	4933	5266	5503	5675	5802	5899	5974	6032	6079	6117	6149	6175	6196	6215	6230	-	
30x48	-	-	5475	5880	6172	6387	6547	6670	6765	6841	6901	6950	6991	7024	7053	7076	7097	-	
30x54	-	-	6001	6477	6826	7085	7280	7430	7548	7641	7716	7776	7827	7869	7904	7934	7959	-	
30x60	-	-	-	7062	7468	7772	8003	8181	8322	8433	8523	8597	8657	8708	8751	8787	8818	8845	
30x66	-	-	-	7636	8099	8449	8717	8925	9089	9219	9325	9412	9483	9543	9594	9637	9674	9705	
30x72	-	-	-	-	8722	9119	9423	9661	9849	10000	10122	10222	10305	10375	10434	10484	10526	10563	
36x36	-	4517	5016	5367	5619	5802	5939	6042	6123	6186	6237	6278	6312	6340	6363	6383	6400	6415	
36x42	-	-	5625	6067	6389	6628	6808	6946	7054	7140	7209	7265	7311	7349	7382	7409	7432	7453	
36x48	-	-	6206	6737	7132	7429	7655	7830	7968	8078	8166	8239	8299	8348	8391	8426	8457	8483	
36x54	-	-	6766	7386	7854	8210	8484	8698	8867	9002	9112	9202	9276	9339	9391	9436	9475	9508	
36x60	-	-	-	8018	8559	8975	9297	9551	9753	9915	10047	10155	10245	10321	10385	10440	10486	10527	
36x66	-	-	-	8635	9249	9725	10098	10392	10628	10817	10973	11101	11207	11297	11372	11437	11493	11541	
36x72	-	-	-	-	9928	10465	10887	11223	11493	11712	11891	12039	12162	12266	12354	12430	12495	12551	
36x80	-	-	-	-	10818	11436	11926	12318	12635	12892	13104	13280	13427	13551	13656	13746	13824	13892	
36x84	-	-	-	-	-	11916	12440	12861	13201	13478	13707	13896	14055	14190	14304	14402	14486	14560	
42x42	-	-	-	6820	7230	7540	7777	7961	8105	8221	8314	8391	8454	8507	8551	8589	8622	8650	
42x48	-	-	-	-	8036	8419	8715	8947	9131	9279	9399	9498	9580	9649	9707	9757	9799	9836	
42x54	-	-	-	-	8814	9270	9627	9910	10135	10318	10467	10590	10692	10778	10851	10913	10967	11013	
42x60	-	-	-	-	-	10519	10853	11121	11340	11519	11667	11791	11895	11984	12060	12125	12181	12218	
42x66	-	-	-	-	-	11392	11779	12092	12347	12557	12732	12878	13002	13107	13197	13275	13343	13403	
42x72	-	-	-	-	-	12251	12691	13049	13342	13584	13786	13956	14100	14222	14327	14418	14497	14567	
42x80	-	-	-	-	-	-	13889	14307	14652	14938	15178	15380	15551	15698	15824	15933	16028	16108	
42x84	-	-	-	-	-	-	14481	14930	15301	15610	15868	16087	16272	16431	16568	16686	16789	16879	
42x96	-	-	-	-	-	-	-	-	17227	17604	17922	18191	18420	18617	18787	18934	19063	19183	
48x48	-	-	-	8293	8896	9365	9734	10026	10260	10450	10604	10732	10839	10929	11005	11069	11125	11174	
48x54	-	-	-	-	9720	10278	10720	11075	11361	11594	11785	11944	12077	12189	12285	12367	12437	12498	
48x60	-	-	-	-	10517	11162	11680	12097	12437	12715	12945	13137	13298	13434	13550	13650	13736	13811	
48x66	-	-	-	-	-	12024	12616	13098	13492	13817	14087	14313	14503	14664	14802	14921	15023	15113	
48x72	-	-	-	-	-	-	13534	14080	14530	14902	15213	15474	15694	15882	16042	16181	16301	16405	
48x80	-	-	-	-	-	-	14733	15366	15890	16327	16693	17002	17264	17488	17680	17846	17990	18116	
48x84	-	-	-	-	-	-	-	16000	16562	17031	17426	17759	18042	18285	18493	18673	18830	18966	
48x96	-	-	-	-	-	-	-	17873	18548	19116	19597	20005	20353	20652	20910	21134	21329	21500	
48x108	-	-	-	-	-	-	-	-	-	21168	21735	22219	22634	22992	23301	23570	23806	24012	
54x54	-	-	-	9765	10585	11243	11773	12201	12550	12836	13072	13270	13436	13576	13696	13799	13888	13966	
54x60	-	-	-	-	11417	12175	12792	13295	13707	14049	14332	14570	14771	14942	15088	15213	15322	15417	
54x66	-	-	-	-	-	13080	13782	14361	14839	15237	15569	15849	16086	16288	16461	16611	16741	16855	
54x72	-	-	-	-	-	-	14750	15404	15948	16403	16785	17108	17383	17617	17819	17994	18146	18279	
54x80	-	-	-	-	-	-	16011	16766	17398	17930	18380	18761	19087	19367	19609	19818	20001	20161	
54x84	-	-	-	-	-	-	-	17436	18112	18683	19167	19578	19931	20233	20495	20723	20921	21095	
54x96	-	-	-	-	-	-	-	-	20219	20907	21494	21997	22429	22803	23127	23409	23656	23874	
54x108	-	-	-	-	-	-	-	-	-	23088	23779	24374	24889	25334	25723	26062	26360	26623	
54x120	-	-	-	-	-	-	-	-	-	25235	26032	26720	27317	27836	28290	28688	29038	29347	
54x144	-	-	-	-	-	-	-	-	-	-	-	31338	32103	32772	33359	33876	34334	34739	

Selection to the right of the divider are suitable for intake (Perimeter Velocity 600 fpm or less)

Penthouse wider than 90" will ship in pieces.

Assembly instructions and fasteners are included.

Dampers & Insect Screens - Add .10 to area shown in tables.



Gravity Relief & Intake Cont.

Throat Size A x B	CFM at SP = 0.05																			
	Number of Tiers and Height in Inches (C)																			
	3	4	5	6	7	8	9	10	11	12	13	14	15	16	17	18	19	20		
	10.5	14	17.5	21	24.5	28	31.5	35	38.5	42	45.5	49	52.5	56	59.5	63	66.5	70		
60x60	-	-	-	11225	12280	13149	13863	14452	14940	15346	15686	15972	16215	16422	16600	16753	16887	17003		
60x66	-	-	-	-	13113	14090	14902	15577	16141	16613	17010	17346	17633	17878	18089	18272	18431	18570		
60x72	-	-	-	-	-	15005	15914	16675	17314	17853	18309	18696	19028	19312	19558	19772	19958	20121		
60x80	-	-	-	-	-	-	17227	18102	18843	19471	20006	20464	20857	21196	21490	21745	21969	22166		
60x84	-	-	-	-	-	-	-	17872	18803	19594	20268	20843	21336	21760	22126	22445	22722	22965	23179	
60x96	-	-	-	-	-	-	-	-	20863	21805	22614	23310	23910	24429	24881	25274	25619	25922	26189	
60x108	-	-	-	-	-	-	-	-	-	23964	24908	25725	26433	27050	27588	28059	28472	28837	29160	
60x120	-	-	-	-	-	-	-	-	-	-	27161	28099	28916	29631	30256	30806	31290	31719	32099	
60x144	-	-	-	-	-	-	-	-	-	-	31577	32756	33792	34703	35506	36216	36845	37403	37901	
66x66	-	-	-	-	-	15064	15983	16755	17404	17952	18415	18810	19147	19438	19688	19906	20096	20263		
66x72	-	-	-	-	-	-	17033	17901	18635	19259	19790	20244	20634	20971	21263	21517	21739	21935		
66x80	-	-	-	-	-	-	-	19387	20235	20960	21582	22117	22579	22979	23328	23632	23899	24135		
66x84	-	-	-	-	-	-	-	-	20114	21019	21796	22463	23039	23537	23970	24347	24677	24968	25224	
66x96	-	-	-	-	-	-	-	-	-	23322	24251	25056	25755	26363	26895	27361	27771	28132	28452	
66x108	-	-	-	-	-	-	-	-	-	-	26643	27585	28409	29129	29762	30318	30809	31244	31630	
66x120	-	-	-	-	-	-	-	-	-	-	28988	30067	31014	31847	32581	33230	33804	34314	34768	
66x144	-	-	-	-	-	-	-	-	-	-	33571	34921	36115	37174	38113	38948	39691	40355	40949	
72x72	-	-	-	-	-	16977	18117	19090	19919	20628	21235	21757	22208	22598	22937	23234	23494	23723		
72x80	-	-	-	-	-	-	-	20627	21582	22405	23114	23728	24260	24723	25128	25483	25795	26072		
72x84	-	-	-	-	-	-	-	-	21379	22396	23275	24036	24696	25269	25770	26208	26593	26932	27232	
72x96	-	-	-	-	-	-	-	-	-	24780	25827	26741	27540	28239	28853	29393	29870	30292	30667	
72x108	-	-	-	-	-	-	-	-	-	-	27093	28307	29374	30312	31137	31866	32510	33081	33588	34040
72x120	-	-	-	-	-	-	-	-	-	-	29354	30732	31950	33026	33979	34823	35572	36238	36833	37364
72x144	-	-	-	-	-	-	-	-	-	-	33761	35460	36975	38327	39532	40607	41569	42429	43201	43894
84x84	-	-	-	-	-	-	-	-	23798	25035	26117	27063	27892	28619	29258	29822	30320	30762	31155	
84x96	-	-	-	-	-	-	-	-	-	-	28836	29966	30964	31845	32626	33318	33934	34482	34972	
84x108	-	-	-	-	-	-	-	-	-	-	31464	32774	33939	34976	35898	36721	37455	38113	38702	
84x120	-	-	-	-	-	-	-	-	-	-	-	35509	36840	38030	39094	40048	40903	41671	42362	
84x144	-	-	-	-	-	-	-	-	-	-	-	40819	42475	43968	45315	46530	47627	48619	49516	

Selection to the right of the divider are suitable for intake (Perimeter Velocity 600 fpm or less)

Penthouse wider than 90" will ship in pieces.

Assembly instructions and fasteners are included.

Dampers & Insect Screens - Add .10 to area shown in tables.